




# Skyward Arena Scheduling

*What is Skyward Arena Scheduling?*

*Skyward Arena Scheduling empowers parents and students with the ability to build their own class schedule. Parents and students can select the courses they want, with the teachers they want, during the periods they want.*

## Logging into Skyward Family and Student Access

Login to Skyward Family and Student Access at <http://jordandistrict.org> or from your school's website.  
For login and password information contact your school.



Jordan School District  
Student System

Login ID:

Password:

[Forgot your Login/Password?](#)

04.12.02.00.03

Login Area:  ▼

## Navigating to Arena Scheduling

Select the student name and the school that the student will be attending next school year.  
Under Arena Scheduling, click on the “Courses for <school year>” link.

The screenshot shows the Skyward Family Access interface. At the top, there are dropdown menus for 'Student: JANE DOE' and 'School: MY SCHOOL', with red arrows pointing to them. To the right are buttons for 'Account Info', 'Print', and 'Logout'. Below this is a calendar for February 2013, with 'Previous Month' and 'Next Month' buttons. The calendar grid shows dates from 1 to 28. On the left sidebar, there are several menu categories: 'General Information' (with links like Calendar, Student Information, Skylert, Gradebook, Message Center, Attendance, Schedule, Graduation Requirements, Test Scores, Food Service, Fee Management, Report Cards, Academic History, Email Notifications, Health Information, Login History), 'Online Assignments' (with links for Current Assignments and Past Assignments), 'Arena Scheduling' (with a link for 'Courses for 2013-2014'), and 'District Links' (with a link for 'Parent/Teacher Scheduler'). A red arrow points to the 'Courses for 2013-2014' link. At the bottom left, it says 'Translation powered by Google™'. At the bottom right, there are four checked checkboxes: 'Show Absences/Tardies', 'Show MC-Messages', 'Show Lunch Menus', 'Show Gradebook Assignments (Grade Earned)', and 'Show ST-Student Tests'.

Student: JANE DOE School: MY SCHOOL Account Info Print Logout

Previous Month February 2013 Next Month

Sunday	Monday	Tuesday	Wednesday	Thursday	Friday	Saturday
					1	2
3	4	5	6	7	8	9
10	11	12	13	14	15	16
17	18 No School	19	20	21	22	23
24	25	26	27	28		

**General Information**  
[Calendar](#)  
[Student Information](#)  
[Skylert](#)  
[Gradebook](#)  
[Message Center](#)  
[Attendance](#)  
[Schedule](#)  
[Graduation Requirements](#)  
[Test Scores](#)  
[Food Service](#)  
[Fee Management](#)  
[Report Cards](#)  
[Academic History](#)  
[Email Notifications](#)  
[Health Information](#)  
[Login History](#)

**Online Assignments**  
[Current Assignments](#)  
[Past Assignments](#)

**Arena Scheduling**  
[Courses for 2013-2014](#)


**District Links**  
[Parent/Teacher Scheduler](#)

Translation powered by Google™

Show Absences/Tardies  Show Gradebook Assignments (Grade Earned)  
 Show MC-Messages  Show ST-Student Tests  
 Show Lunch Menus

# Searching for a Class

Classes can be searched by period, course description, subject or teacher. Select a Search Option and then click on the "Search" button. The first fifteen classes are displayed. To see the next fifteen classes, click on the "Next" link.



**SKYWARD  
FAMILY  
ACCESS**

Student: JANE DOE School: MY SCHOOL

[Account Info](#) [Print](#) [Logout](#)

---

**Courses for 2013-2014**

Available Selected Classes

**Arena Scheduling - Available Classes for JANE DOE**

**Select Period:** 2 Search

**Selected Search Option**

By Period  
 By Course Description  
 By Subject  
 By Teacher

---

Option	Fit	Seats Avail	Description	Teacher	Days Meet	Prd Term	*Indicator	Subject	Grades	Class	Rm #
<a href="#">Add</a>	Yes	35	ACCOUNTING 1	OSBORN, CHRISTY	A	2 S1		Career and Tech	10- 12	<a href="#">83001/02</a>	B205
<a href="#">Add</a>	Yes	35	ACCOUNTING 2	OSBORN, CHRISTY	A	2 S2		Career and Tech	11- 12	<a href="#">83011/22</a>	B205
<a href="#">Add</a>	Yes	45	AEROBIC FITNESS	CONRY, ELIZABETH	A	2 S1		Healthy Life	10- 12	<a href="#">71251/02</a>	G104
<a href="#">Add</a>	Yes	45	AEROBIC FITNESS	CONRY, ELIZABETH	A	2 S2		Healthy Life	10- 12	<a href="#">71251/22</a>	G104
<a href="#">Add</a>	Yes	38	ALGEBRA 2	BEERE, GRANT	A	2 Y		Mathematics	10- 12	<a href="#">51110/02</a>	M103
<a href="#">Add</a>	Yes	35	ALGEBRA 3	STRASTERS, CAMILLE	A	2 Y		Mathematics	10- 12	<a href="#">51115/02</a>	M105
<a href="#">Add</a>	Yes	35	AMERICAN PROBLE	GRIFFIN, ANNE	A	2 S1		Social Studies	10- 12	<a href="#">61211/02</a>	SS214
<a href="#">Add</a>	Yes	35	BIOL 1010/1015	SANSOM, REBECCA	A	2 S1	C	Science	11- 12	<a href="#">32211/02</a>	S108
<a href="#">Add</a>	Yes	35	BIOL 1010/1015	SANSOM, REBECCA	A	2 S2	C	Science	11- 12	<a href="#">32212/22</a>	S108
<a href="#">Add</a>	Yes	38	BIOLOGY	BUTTERBAUGH, JEREMY	A	2 Y		Science	10- 12	<a href="#">31110/02</a>	S101
<a href="#">Add</a>	Yes	38	BIOLOGY	JOHNSON, MICHAEL	A	2 Y		Science	10- 12	<a href="#">31110/12</a>	S106
<a href="#">Add</a>	Yes	38	BIOLOGY	BOUWHUIS, ANDREA	A	2 Y		Science	10- 12	<a href="#">31110/22</a>	S110
<a href="#">Add</a>	Yes	38	BIOLOGY	THRELKELD H.	A	2 Y		Science	10- 12	<a href="#">31110/32</a>	C113
<a href="#">Add</a>	Yes	35	BUSINESS MGMT	HARDMAN, JAY	A	2 S1		Career and Tech	10- 12	<a href="#">83081/02</a>	B201
<a href="#">Add</a>	Yes	35	CERAMICS 2	BIRD, ANDREW	A	2 S1		Fine Arts	10- 12	<a href="#">10301/02</a>	A108


---

[All](#) [0](#) [1](#) [2](#) [3](#) [4](#) [5](#) [6](#) [7](#) [8](#) [9](#) [A](#) [B](#) [C](#) [D](#) [E](#) [F](#) [G](#) [H](#) [I](#) [J](#) [K](#) [L](#) [M](#) [N](#) [O](#) [P](#) [Q](#) [R](#) [S](#) [T](#) [U](#) [V](#) [W](#) [X](#) [Y](#) [Z](#) [Next](#)

\* Indicators  
A - Alternate Class      F - Class is Full      P - Class Has Pre-Requisites      C - Class Has Co-Requisites

## Adding a Class

If there are Seats Available for a class then an “Add” link will appear. To add a class, click on the “Add” link and then click on the “OK” button to confirm. Under Term, classes are identified as quarter “Q1, Q2, Q3, or Q4”, first semester “S1”, second semester “S2” or year-long “Y”.



Student: JANE DOE School: MY SCHOOL

Language: English
[Account Info](#)
[Print](#)
[Logout](#)

**Courses for 2013-2014** Available Selected Classes

**Arena Scheduling - Available Classes for JANE DOE**

Select Period: 3 Search

**Selected Search Option**

By Period

By Course Description

By Subject

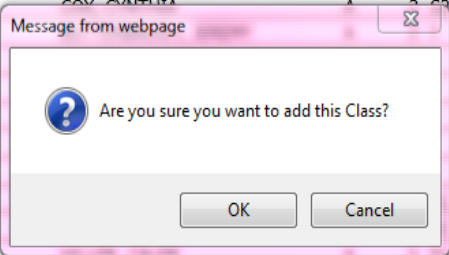
By Teacher

Option	Fit	Seats Avail	Description	Teacher	Days Meet	Prd Term	*Indicator	Subject	Grades	Class	Rm #
<a href="#">Add</a>	No		25 3D ANIMATION	MANSOURI, MELINDA	A	3 Q3		Career and Tech	11- 12	<a href="#">81317/02</a>	JATC
	"	"	"	MANSOURI, MELINDA	A	4 "		"	"	"	"
<a href="#">Add</a>	No		35 ACT/EX SPT PERF	ARBOGAST, JEFFREY	A	3 S1		Other	10- 12	<a href="#">02013/03</a>	E223
	No	Closed	ALGEBRA 2	BEERE, GRANT	A	3 Y	F	Mathematics	10- 12	<a href="#">51110/03</a>	M103
<a href="#">Add</a>	No		35 AT 2175/SPRT MD	COX, CYNTHIA	A	3 S1	C	Career and Tech	11- 12	<a href="#">72081/03</a>	208
<a href="#">Add</a>	No		35 AT 2175/SPRT MD	COX, CYNTHIA	A	3 S1	C	Career and Tech	11- 12	<a href="#">72082/23</a>	208
<a href="#">Remove</a>	Enr		37 BIOLOGY					Science	10- 12	<a href="#">31110/03</a>	S101
<a href="#">Add</a>	No		38 BIOLOGY					Science	10- 12	<a href="#">31110/13</a>	S106
<a href="#">Add</a>	No		38 BIOLOGY					Science	10- 12	<a href="#">31110/23</a>	S112
<a href="#">Add</a>	No		35 CALCULUS AP BC					Mathematics	11- 12	<a href="#">51369/03</a>	M108
	"	"	"					"	"	"	"
<a href="#">Add</a>	No		35 CBNT & MLLWRK					Career and Tech	11- 12	<a href="#">89103/03</a>	V101
	No		35 CERAMICS 1				A	Fine Arts	10- 12	<a href="#">10291/03</a>	A108
	No		35 CERAMICS 1				A	Fine Arts	10- 12	<a href="#">10291/23</a>	A108
<a href="#">Add</a>	No		35 CHEM 1010/CHEM	HILLER, CALEB	A	3 S2	C	Science	11- 12	<a href="#">32371/03</a>	S103
<a href="#">Add</a>	No		35 CHEM 1010/CHEM	HILLER, CALEB	A	3 S2	C	Science	11- 12	<a href="#">32372/23</a>	S103
<a href="#">Add</a>	No		35 CHEMISTRY	MULLINS, ROBERT	A	3 Y		Science	10- 12	<a href="#">31210/03</a>	C113

[All](#) [0](#) [1](#) [2](#) [3](#) [4](#) [5](#) [6](#) [7](#) [8](#) [9](#) [A](#) [B](#) [C](#) [D](#) [E](#) [F](#) [G](#) [H](#) [I](#) [J](#) [K](#) [L](#) [M](#) [N](#) [O](#) [P](#) [Q](#) [R](#) [S](#) [T](#) [U](#) [V](#) [W](#) [X](#) [Y](#) [Z](#) [Next](#)

\* Indicators

A - Alternate Class      F - Class is Full      P - Class Has Pre-Requisites      C - Class Has Co-Requisites



## Reviewing Schedule and Removing a Class

Click on the “Selected Classes” tab at the top of the screen to review and print the schedule. All Terms and Periods should have a class selected. To remove a class, click on the class description link and then click on the “OK” button to confirm.

Student: JANE DOE School: MY SCHOOL Language: English Account Info Print Logout

**Courses for 2013-2014** Available Selected Classes

**Arena Scheduling - Select Classes for JANE DOE**  
 Student Status: Open  
 School Year: 2014  
 Graduation Year: 2015  
 Credits: 7.000

Print To remove a class from your schedule, click the class description if it is underlined.

	Term 1	Term 2	Term 3	Term 4
Period 1	<u>BIOLOGY</u> BOUWHUIS, ANDREA (31110/11) A Bldg: 704 Rm: S110	<u>BIOLOGY</u> BOUWHUIS, ANDREA (31110/11) A Bldg: 704 Rm: S110	<u>BIOLOGY</u> BOUWHUIS, ANDREA (31110/11) A Bldg: 704 Rm: S110	<u>BIOLOGY</u> BOUWHUIS, ANDREA (31110/11) A Bldg: 704 Rm: S110
Period 2	<u>ALGEBRA 3</u> STRASTERS, CAMILLE (51115/02) A Bldg: 704 Rm: M105	<u>ALGEBRA 3</u> STRASTERS, CAMILLE (51115/02) A Bldg: 704 Rm: M105	<u>ALGEBRA 3</u> STRASTERS, CAMILLE (51115/02) A Bldg: 704 Rm: M105	<u>ALGEBRA 3</u> STRASTERS, CAMILLE (51115/02) A Bldg: 704 Rm: M105
Period 3	<u>LANG ARTS 11</u> SELL, EMILY (46111/13) A Bldg: 704 Rm: E219	<u>LANG ARTS 11</u> SELL, EMILY (46111/13) A Bldg: 704 Rm: E219	<u>LANG ARTS 11</u> SELL, EMILY (46111/13) A Bldg: 704 Rm: E219	<u>LANG ARTS 11</u> SELL, EMILY (46111/13) A Bldg: 704 Rm: E219
Period 4	<u>EUROPE HIST AP</u> BRIDGE, ALLISON (61030/04) A Bldg: 704 Rm: SS205	<u>EUROPE HIST AP</u> BRIDGE, ALLISON (61030/04) A Bldg: 704 Rm: SS205	<u>EUROPE HIST AP</u> BRIDGE, ALLISON (61030/04) A Bldg: 704 Rm: SS205	<u>EUROPE HIST AP</u> BRIDGE, ALLISON (61030/04) A Bldg: 704 Rm: SS205
Period 5	<u>COMPUTER TECH</u> LAVIN, CRAIG (83111/05) B Bldg: 704 Rm: V200	<u>COMPUTER TECH</u> LAVIN, CRAIG (83111/05) B Bldg: 704 Rm: V200	<u>CHILD DEVELOP</u> FAIRBANKS, GERRY (87001/25) B Bldg: 704 Rm: H107	<u>CHILD DEVELOP</u> FAIRBANKS, GERRY (87001/25) B Bldg: 704 Rm: H107
	<u>PAINTING 1</u> WEIDMER, JATME	<u>PAINTING 1</u> WEIDMER, JATME	<u>PAINTING 2</u> WEIDMER, JATME	<u>PAINTING 2</u> WEIDMER, JATME

Translation powered by Google™